

# PIM/PCD 120

10/700 $\mu$ s IMPULSE TEST SYSTEM

www.haefelyemc.com



PIM 120 impulse module (upper) with PCD120 coupling network (lower)

To be used for telecommunication and ITE equipment to perform

- Resistibility tests
- Safety tests
- EMC tests

requiring the 10/700 $\mu$ s high energy surge impulse.

Telecom line pulses are characterized by high energy; fast rise time pulses derived from lightning transients modified by the line impedance.

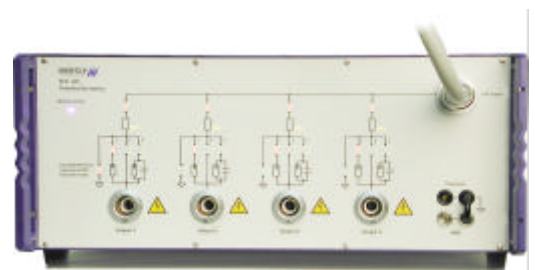
Applications are for the testing of customer premise, switching, transmission and supervisory equipment.

- ONE SOLUTION for :
- ITU K 17, 20, 21 & 45
  - EN 300 386-2
  - IEC 60950
  - UL 1950
  - IEC 61000-4-5 (partial)

## FEATURES

- Impulse voltage up to 7.4kV
- 15 $\Omega$  & 40 $\Omega$  impedance switchable
- Oscilloscope Impulse monitors
- User changeable coupling elements
- 4 wire interface
- Automatic polarity switching
- Automatic IEC mode configuration
- Gas arrestor coupling mode
- Capacitor coupling mode
- Resistor coupling modes
- Direct coupling
- Remote control using WinFEAT&R
- Supplied to ISO 9001

## BENEFITS

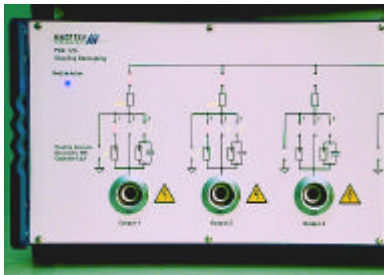


Actual coupling configurations are fully visualized on the front panel by LED bars for all paths & outputs.

- Fully automatic coupling configurations
- Coupling visualization

**HAEFELY** EMC  
TECHNOLOGY

## FLEXIBILITY



e.g. IEC coupling configuration

**PIM/PCD120** modules are fully compliant to the ITU recommendations.

- System can be configured for 2 and 4 wire interfaces.
- Coupling elements are user accessible.
- Automatic setting for IEC 1, 2, 3 & 4 wire tests.
- Direct high voltage output for safety test probe
- Dual output impedances

As part of the Surge Platform System, additional impulse or coupling modules to meet a wide variety of applications can be simply attached to the existing test system using the Haefely Bus. No hardware changes are necessary; this is true Plug & Play technology.

## EASY OPERATION

IEC 61000-4-5 describes testing of up to 4 data and telecom cables. The test system must always have a 40 ohm impedance which means changing coupling resistor values dependant on the number of paths selected. **PIM/PCD120** takes care of this automatically.

A built-in Micro processor is the user interface and controls:

- Test/Program setup
- System configuration
- Peak Voltage monitoring
- Test Log file printing

Operating **PIM/PCD120**, from WinFEAT&R Software opens additional possibilities such as:

- EUT failed limits control
- Automatic Test reporting in MS Word™ format
- EUT monitoring during testing
- Pre programmed test routines.

## SAFETY & QUALITY

Designed as an expandable system, **PIM/PCD120** Modules can be used either

- in a desktop configuration or
- rack mounted with other system modules.

All EUT connections are on the unit front panels providing a clean separation between test instrument and EUT connections.

A full range of accessories is available to provide safe and easy connections with the test object.

The unit is designed according to EMC and LV directives.

**PIM/PCD120** system can be supplied with additional high visibility warning lamp.

Access to all operational high voltage circuits is safety interlock protected.

## TECHNICAL SPECIFICATION

PIM 120		PCD 120	
Impulse Voltage	0.20kV ... 7.4 kV	Coupling ITU	4 x 25Ω
Impulse Repetition	5 ... 10 seconds	Coupling IEC	25Ω, 50Ω, 75Ω, 100Ω
Voltage Waveform	Risetime 10μs Backtime 700μs	Gas arrestor	90Vdc
Current Waveform	Risetime 4μs Backtime 300μs	Coupling capacitor	0.1μF
Impulse Polarity	Positive, Negative, Alternating		

## ORDERING INFORMATION

PSURGE 8000 Controller	249900
PIM 120 Impulse Module	249940
PCD 120 4-wire Coupler	249941
DEC 1A 4-wire Decoupler	249523
DEC 3A 4-wire Decoupler	249524
WinFEAT&R Software	249700

Issue 01/02

**HAEFELY** EMC  
TECHNOLOGY

**Haefely Test Inc.**  
**Business Unit EMC**  
 1308 Devils Reach Road  
 Woodbridge, VA 22192  
 USA  
 Phone: ++ 1 703 494-1900  
 Fax: ++ 1 703 494-4597  
 email: ReveszHTU@aol.com