

# PIM910

10/1000us & 10/360us HYBRID  
IMPULSE MODULE FOR PSURGE  
8000 PLATFORM<sup>®</sup>



PIM910 impulse module (lower in rack) and controller (PSURGE8000) with user interface and remote control (from PC) using WinFEAT&R software

## STANDARDS

### **BELLCORE 1089**

Electromagnetic  
Compatibility and  
Electrical Safety -  
Generic Criteria for  
Network  
Telecommunications  
Equipment

And more product  
specific standards.

## APPLICATION GR-1089

Bellcore GR-1089-CORE describes tests to be conducted on Network Telecommunications Equipment installed in a central office environment (Telephone Exchange). The standard GR-1089 is incorporated, along with many other test standards, into the **NEBS** (Network Equipment Building Safety) program required for the installation of equipment within the USA. The RBOC's (Regional Bell Operating Companies) all insist on NEBS testing before allowing and equipment to be installed in their buildings. Test condition A of 1089 requires impulse waveforms have the SAME shape for BOTH open AND short circuit conditions. To achieve this requires a high energy source serving 2 separate impulse outputs.

## Dual High Voltage Outputs

ensure the voltage & current wave meet the Bellcore 1089 tolerances and deliver the required energy to the EUT

## High Waveform Integrity

Amplitude, rise time and back time have tight tolerances ensuring the EUT is not over-tested

## Hybrid Impulses

Voltage and current impulses maintain the SAME waveform under ALL open and short circuit conditions

## Meets Test Condition A

Of Bellcore GR-1089-CORE for a 3-terminal Surge on Tip & Ring pairs.

## FEATURES

- 10/1000us HYBRID pulse 6Ω
- 10/1000us HYBRID pulse 10Ω
- 10/360us HYBRID pulse 10Ω
- maximum 2 x 110A = 220A
- EUT output via PCD 900
- WinFEAT&R software integrated
- Meets Bellcore 1089 Test connection A criterion
- 2 years warranty

## BENEFITS

- Easy connection of EUT
- Tests 3 x Faster
- Automatic Test report generation
- Reproducible test results.
- Cost effective solution as module in the Surge Platform<sup>®</sup> System

**HAEFELY** EMC  
TECHNOLOGY

## TECHNICAL SPECIFICATION PIM 910

Impulse Voltage	0.05 – 1.1kV -0% +10%	Impulse Rise time	10us -25% +0%
Impulse Current per output path	5 – 110A -0% +10%	Impulse duration	360us -0% +25%
Repetition @ Umax	60 seconds / 1 per minute	Impulse duration	1000us -0% +25%
Impulse Polarity	Positive and Negative		
Impulse Output	HV connector with integrated safety circuit	Size	19" / 7 units
Source Impedance	Selectable 10 Ohms or 6 Ohms	Weight	34 kg

### COMPLEMENTARY PRODUCT LINES

PIM 910 can be used alone or together with other modules of the Surge Platform to form a test system to meet the impulse requirements for **BELLCORE GR-1089-CORE**

#### ■ PIM 900

2/10us Hybrid impulse up to  $V_{pk} = 5.5kV$   
 $I_{pk} = 550A$  per output  
 $4 \times 550A = 2.2kA$

#### ■ PCD 900

4 output Tip & Ring coupler voltage & current monitors meets test conditions A & B

#### ■ PIM 930

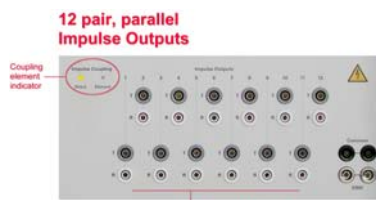
12 pair Tip & Ring generator with integrated coupler voltage & current monitors meets test condition B

#### ■ PESD 1610

ElectroStatic Discharge up to 16kV air, 8kV contact



PCD900 coupling module (middle) meets GR-1089 test conditions A & B



PIM930 12 pair generator with integrated coupling module



PESD1610 ESD gun

### OPTIONAL EQUIPMENT

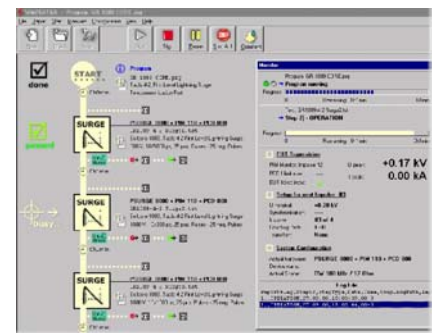
■ **Telecom Adapter boxes**  
 RJ 11, RJ 12 and RJ 45 adapters fit into PCD 900



■ **Rack Mounting System**  
 Units can be rack mounted for mechanical stability and mobility.

#### ■ WinFEAT&R Software

Runs under windows 98, NT, ME, 2000, XP



### ORDERING INFORMATION

PIM 910	249 932
PCD 900	249 930
PIM 900	249 931
PIM 930	249 933
PSURGE8000 Controller	249 900
WinFEAT&R software	249 970
External warning lamp	249 944

Issue 6/02

**HAEFELY** EMC  
 TECHNOLOGY

#### Haefely Test AG

Lehenmattstrasse 353  
 CH-4028 Basel  
 Switzerland

Phone: ++ 41 61 373 41 11

Fax: ++ 41 61 373 45 99

email EMCsales@haefely.com