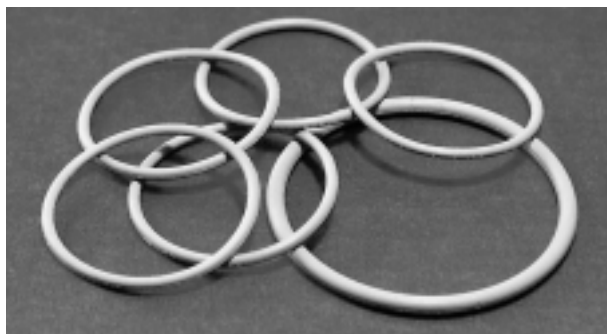


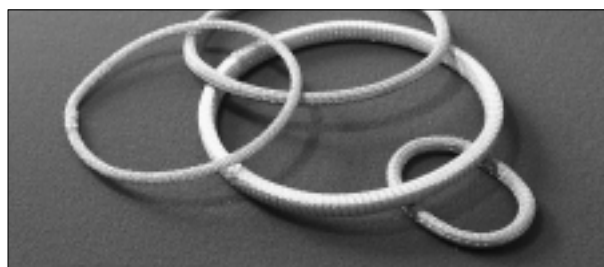
1300 Series "O" Rings



1300 Series are "O" rings of which there are various types. For a example standard range of moulded conductive elastomer "O" rings for use with rear mounting jam nuts on connectors, custom sizes are also available. Larger rings over 50mm in diameter can be jointed from conductive elastomer extruded sections or knitted wire mesh strip to the desired size.

Flat washer type rings can be die cut or fabricated from sheet gasket materials such as orientated wire in silicone (400 Series), expanded mesh in elastomer (500 Series) and 300 Series knitted wire mesh. Compressed mesh "O" rings are available made from the knitted wire materials from the 100 and 800 Series.

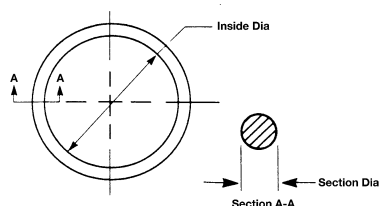
Large Fabricated "O" Rings



"O" rings over 50mm in diameter can be fabricated and have an advantage of tubular sections being available thereby giving a softer, easier to compress ring. Rings are made by vulcanised joint on conductive elastomer sections (cord or tube). Knitted mesh rings can be fabricated by sewing, bonding or both. Materials for rings can be chosen from cord or tubular sections of the 100, 200, 600, 700, 800 and 1200 Series.

How to order: 1300-material type-developed length i.e. Silicone sponge core 4.8 Dia section with 2 layers knitted monel mesh jointed to developed length 760mm. Part Number: 1300-(212-0048)-760

Moulded "O" Rings



These "O" rings are designed to suit connectors from the MIL C 38999, 26482 and 81511 range for rear mounting jam nuts.

Table 1		
MIL-C-38999/26482		
Shell Size	Inside Dia	Section Dia
6	14.00	1.78
8	17.16	1.78
9	20.35	1.78
11 & 12	25.12	1.78
13 & 14	28.30	1.78
15 & 16	31.47	1.78
17 & 18	34.65	1.78
19 & 20	37.77	2.62
21 & 22	40.95	2.62
23 & 24	44.12	2.62

Table 2		
MIL-C-81511		
Shell Size	Inside Dia	Section Dia
8	18.77	1.78
10	21.95	1.78
13 & 14	28.30	1.78
15 & 16	31.47	1.78
17 & 18	34.65	1.78

How to order: Table 1: 1301-shell size-material code.

Table 2: 1302-shell size-material code.

Select materials from 1200 Series.

Flat Washer Type Rings

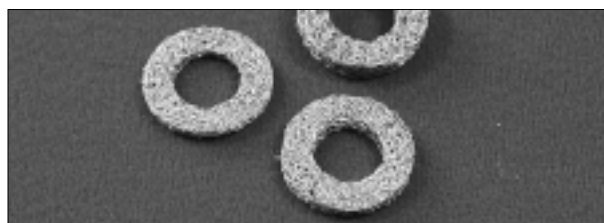


Flat washer type rings can be die cut from sheet material from the 400, 500 and 1200 Series.

Fabricated types can be made from 300 Series with the elastomer being die cut and the knitted wire mesh bonded to the inside or the outside.

How to order: Please provide drawings of specification giving material type preferred, thickness, inside and outside diameters.

Compressed Mesh Rings



Compressed mesh rings can be used as good grounding in rotary shaft applications or where vibration damping is needed. The wire mesh available is that shown for the 100 and 800 Series.

How to order: Please provide drawings or specification giving material type, preferred thickness and density, inside and outside diameters.

How to order: Table 1: 1301-shell size-material code.

Table 2: 1302- shell size-material code.

DIMENSIONS ARE IN MILLIMETRES